



St. Vincent's Primary School Handbook



Kindness

Resilience

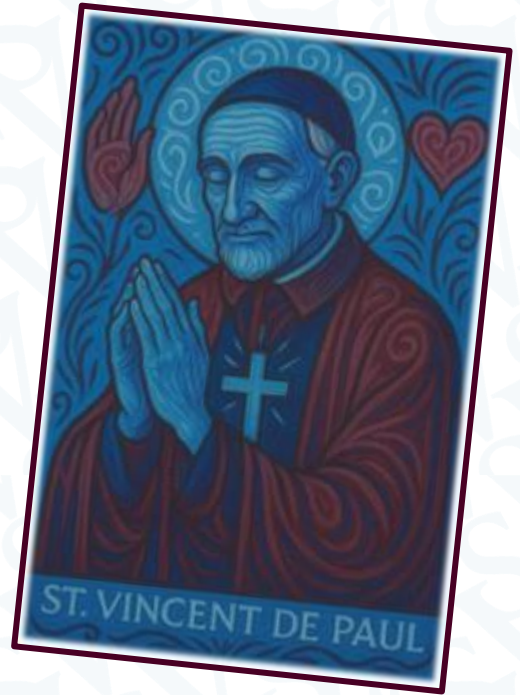
Respect

Commitment

Excellence

Contents

- 1. Introduction by the Head Teacher**
- 2. About our school**
- 3. School Ethos**
- 4. Staff List**
- 5. Attendance**
- 6. Parental Involvement & Parent Council**
- 7. The Curriculum**
- 8. Assessment and Tracking**
- 9. Reporting**
- 10. Enrolment and Transitions**
- 11. Support for Pupils**
- 12. School Improvement**
- 13. School Policies and Practical Information**
- 14. General Data Protection Regulation as supplemented by the Data Protection Act 2018 (GDPR)**



If you need this information in another language or format, please contact us to discuss how we can best meet your needs.

Phone 0303 123 1023

Email education@southlanarkshire.gov.uk

1. Introduction by the Headteacher



Welcome to St Vincent's Primary School. We are located in the Greenhills area of East Kilbride in South Lanarkshire, Scotland. At St Vincent's Primary School, our Catholic ethos is central to everything we do, and we are committed to providing a safe, nurturing and happy environment where all children are supported to succeed. Guided by our motto, "Kindness is the key to hearts," our core values of Kindness, Fairness, Friendship, Respect and Resilience underpin daily life in our school and are lived through our words and actions.

We work in close partnership with parents/carers, our parish and the wider community, holding high expectations for every learner. We are committed to providing engaging, relevant and inclusive learning experiences that develop skills, confidence and a love of learning. Through strong relationships, pupil voice and high-quality learning and teaching, we support our children to achieve their full potential and to grow as Successful Learners, Confident Individuals, Effective Contributors and Responsible Citizens, ready for the future and rooted in faith.

Kindness

Resilience

Respect

Commitment

Excellence

South Lanarkshire Council is the fifth largest authority in Scotland. It covers the following main areas; Clydesdale in the south which features extensive rural areas, Cambuslang, Rutherglen, Blantyre and Uddingston to the north as well as the towns of East Kilbride and Hamilton. The Council's Plan, Connect, sets out the Council's vision which is, "to improve the lives and prospects for everyone in South Lanarkshire".

For Education Resources this means delivering services of the highest quality as well as striving to narrow the gap. It is about continually improving the services for everyone at the same time as giving priority to children, young people, families, and communities in most need. The priorities for schools and services are set out in the Education Resources Plan which confirms the commitment to provide better learning opportunities and outcomes for children and young people. This is available at [Education Resources Plan 2025/26 Education and learning - South Lanarkshire Council](#)

Whether you are a part of the St. Vincent's Community already or you are considering joining us, we aim to provide relevant and useful information that can support you and your child on their educational journey. Please get in touch if you have any questions, would like to organise a tour or require further information.

Mr Michael Owens
Head Teacher

2. About Our School

St Vincent's Primary School,
Crosshouse Road,
East Kilbride,
South Lanarkshire,
G75 9DG.

Phone: 01355 241649

Email: gw14stvincentsoffice@glow.sch.uk

Website: <https://www.st-vincent-s-pri.s-lanark.sch.uk/>

Roll: 351
Stages: P1-P7
Sector: Denominational Primary School
Gaelic: No

Absence: Call the number above and follow the instructions to leave a message.
Information: If you require anything further or would like to request a tour, email or call.
Complaints: Please call or email with 'FAO Mr Owens'.
Response Time: We aim to respond within corporate guidelines of 5 working days.
SLC Complaints: Have Your Say
Emergency: **Call** if your query is urgent. In the event of a school emergency, we will call you.

3. School Ethos

At St Vincent's Primary School, our Catholic ethos is central to everything we do. Guided by our motto, **"Kindness is the key to hearts"** and rooted in the Gospel values of Faith, Love, Forgiveness, Compassion and Service, as well as our school values of Kindness, Fairness, Friendship, Respect and Resilience. In partnership with all stakeholders, we aim to:

- Provide a **safe, nurturing and inclusive environment** where every child feels valued, respected and supported.
- Deliver **high-quality learning** that raises attainment and achievement.
- **Meet the needs of all learners** by offering experiences that challenge and motivate.
- Promote **positive relationships, wellbeing and resilience**, supporting children to develop confidence.
- Encourage learners to **recognise their gifts and celebrate success**, fostering ambition and high expectations.
- Develop learners as **role models and citizens**, providing opportunities for leadership, service and contribution.
- Work in **strong partnership with parents/carers, the parish and wider community** to support learning, wellbeing and faith development.
- Support children on their **journey of faith**, promoting Gospel values of faith, love, forgiveness, compassion and service.

4. Staff List



Senior Leadership Team

Head Teacher

Mr Michael Owens

Depute Head Teachers

Miss D Timmons (P1-3)

Miss J Lavery (P4-7)

Principal Teachers

Mrs Y Boyle

Mrs L Ziolo

Class Teachers

Mrs L McGeary

Miss A Friel

Mrs S Reilly

Mr N McKenna

Mrs C Farrell

Mrs K Dowie

Mrs J Field

Mrs L Murphy

Mrs J Hogg

Mrs S Kelly

Mr M McKenna

Mrs Y Boyle

Mrs C Steele

Mrs B Gibson

Mr C Gahagan

Mrs M Currie

Mrs K Johnstone

Mrs L Ziolo

Support Staff

Mrs D Donnelly (TL)

Mrs A Robbie

Miss M Clifford

Mrs M Lloyd

Mrs L Daley (TL)

Mrs A McAneny

Mrs H Young

Mrs L Boyle

Mrs J Aitkin

Mrs D Stewart

Mrs K Pollock

Facilities

Mr G Doyle - Janitor

Mrs Kenny – Kitchen

Miss Hughes - Kitchen

Mrs McCue - Kitchen

Miss Love - Kitchen

Mrs Baidge - Cleaning

Mrs Chawner – Kitchen

Mrs Nicol - Kitchen

Mrs Russell - Cleaning

5. Attendance

Encouraging School Attendance

We believe that regular school attendance is key to raising attainment and achievement. It's a shared responsibility among parents/carers and the school to emphasise the importance of attending school. For your convenience, school holiday dates and in-service dates can be found on the council's website: www.southlanarkshire.gov.uk.

Every effort should be made to ensure that your child attends school during term time. Please contact the school as soon as possible if your child is unable to attend school. It is important for the school to work with parents/carers in encouraging children to attend school. All absences are required by law to be recorded. Absences will normally fall under two categories – authorised or unauthorised. In cases where your child is unable to attend school, parents are asked to:

On the first day of absence, please call or email before 9am. If we have not heard from you, we will text, email and/or call you to confirm. Please respond promptly.

If you know they have a hospital/dental appointment, please let us know in advance via email. Requests for your child to be absent from school to make an extended visit to relatives either in the UK or overseas must be made in writing to the head teacher, detailing the reason, destination and duration of absence and arrangements for their continuing education. On these occasions the pupil will be marked as an unauthorised absence. Parents may request that their children be permitted to be absent in order to celebrate recognised religious events. Advance notice should be provided to the school when children will be absent. Appropriate requests will be granted, and the pupil noted as an authorised absentee in the register.

Family Holidays During Term Time - Family holidays taken during school term time will be recorded as unauthorised absences in line with Scottish Government and South Lanarkshire Council policy. The school is not required to provide work during this period, and parents are asked to avoid arranging holidays that disrupt their child's learning.

Emergency Information - We strive to keep the school open during term-time. However, there may be instances such as severe weather or power failures that could affect the school day. In such cases, we will inform you as soon as possible through text or Parent Portal and our social media channels.

Severe Weather Protocol - In the event of severe weather like snow or heavy frost, if the school cannot open at the usual time, we will delay the start until 10 am. Notifications will be posted on social media and the council's website.

Communication - The Council's website, www.southlanarkshire.gov.uk, will provide updates on school closures or delays including further information about the next school day.

Things we need you to do:

- It is important for parents/carers to let the school know of any change to your mobile/home phone number and change of address.

- If for any reason, you are unsure if the school is open visit the website at www.southlanarkshire.gov.uk or email: education@southlanarkshire.gov.uk

6. Parental Involvement & Parent Councils

Parents and carers play a vital role in their child's learning. Research shows that when families are involved, children do better at school and beyond. South Lanarkshire Council values parents as partners and works closely with schools to make this happen.

Why Parental Involvement Matters

- Strong partnerships help schools understand children's needs and help parents feel informed and supported.
- Parents can reinforce learning at home, making schoolwork more meaningful and connected to everyday life.
- Parental involvement can help children develop a love of learning and resilience when facing challenges.
- When parents work with school and take an interest in learning, children often achieve more academically and feel more confident.

Our Commitment - We want parents and carers to:

- Feel welcome and involved in school life.
- Be well informed about their child's learning.
- Have opportunities to support learning at home.
- Share views and take part in discussions about education.

Parent Forum and Parent Council

- Every parent with a child at school is part of the Parent Forum.
- Each school has a Parent Council, a formal group that represents parents' views and works with the school to improve learning and experiences.

Connect: Supporting Parent Councils. All Parent Councils in South Lanarkshire are members of Connect, Scotland's national organisation for parent groups. Connect offers:

- Free training and advice for Parent Councils.
- Resources and guides to help parents support learning.
- Insurance cover for Parent Council activities. Find out more at <https://www.connect.scot>.

Other Helpful Resources

- Parentzone Scotland – Practical advice and information about learning, additional support needs, and how to get involved: [Parentzone Scotland | Education Scotland](https://www.parentzone.scot)
- National Parent Forum of Scotland – Guidance and updates for parents: <https://www.npfs.org.uk>.

Getting Involved – Please email stvincentspc@hotmail.com for further information regarding our Parent Council. Please also check our school events sheet for meetings dates. All welcome.

7. The Curriculum

Curriculum for Excellence is the name given to the curriculum in Scotland for all children and young people aged 3-18. It is forward looking, coherent, flexible and an enriched curriculum that provides young people with opportunities to engage with the knowledge, skills and attributes they will need to flourish in life, learning and work.

The curriculum places learners at the heart of education and at its centre are four fundamental capacities; Successful Learners, Confident Individuals, Responsible Citizens, and Effective Contributors. It includes all the experiences that are planned for children and young people to support the development of their skills, wherever they are being educated, for example in the family and community, pre-school centre, nursery, and school.

In taking this forward our school will work closely with South Lanarkshire Education Resources and other services to enrich the curriculum, to provide the best possible education for all children and young people. We wish you to feel confident that your child is encouraged and supported to develop their literacy, numeracy and other skills whilst they attend our school. The curricular areas are as follows:

Expressive Arts	Languages & Literacy	Health & Wellbeing	Numeracy & Maths
Religious & Moral	Science	Social Studies	Technologies

If you want to know more about Curriculum for Excellence, please visit Scotland's Curriculum for Excellence (www.scotlandscurriculum.scot). Our learning and teaching activities are based on the outcomes and experiences in the guidelines that all schools have for Curriculum for Excellence.

Level	Stages
Early	The pre-school years and Primary 1 or later for some.
First	To the end of Primary 4, but earlier or later for some.
Second	To the end of Primary 7, but earlier or later for some.

Spiritual, Social, Moral, and Cultural Values (Religious Observance)

At St. Vincent's Primary, we are committed to living out our Catholic values in all aspects of school life. Faith is central to our identity as a denominational school, guiding our relationships, our learning, and our care for one another. We gather as a community to celebrate Mass monthly and on all Holy Days of Obligation, and we pray together daily, nurturing our children's spiritual growth.

As members of a Catholic school, we participate in these celebrations, however, parents who wish for their **child to be withdrawn from whole-school religious observance should contact us directly to discuss alternative arrangements.**

Religious Observance for Roman Catholic Schools

In a letter of guidance issued by the Scottish Government in February 2011, it is acknowledged that Catholic schools take a distinctive approach to the provision of Religious Observance:

Scottish Government Ministers welcome the tradition that, in Roman Catholic denominational schools, Catholic Liturgy will largely shape the nature and frequency of religious observance activities in the classroom and in the wider school community. So, at times, children and young people will be invited to participate in, and sometimes lead prayer and reflection in classrooms and at assemblies. At other times, to honour particular occasions or feasts, chaplains will lead school communities in the celebration of Mass and other forms of liturgical celebration.

8. Assessment and Tracking Progress

We want to share with you on how your child's learning is progressing. **At St. Vincent's Primary School**, we do this through ongoing formative and summative assessments, which are planned by SLT and Class Teachers as part of the Learning and Teaching Process.

Information is gathered through observation, conversation and participation in assessments, as well as children identifying and evaluating their own learning. Pupils' views about the curriculum are gathered through learning conversation at class and whole school levels.

Your child's progress will be reported to you so that you know how well your child is doing, and we aim to convey progress, next steps and how you can help at home. We do this through parents' evenings and report cards.

9. Reporting

We will report **formally** through one end of year report in June and two parents' nights in October and April, though more informal reporting through calls, conversations and/or notes will happen as and when required.

Our 'learner reports' will help you to get to know more about the curriculum which each child follows and will describe their strengths, achievements, and areas for development so you know what encouragement and support you can give.

We welcome any comments or additional information from parents to help us provide the best possible education for your child. If you require information at any point, please get in touch via email and we will get back to you.

10. Enrolment & Transitions

Enrolment - To register your child for school you should complete our online registration form. This can be done using the South Lanarkshire website.

www.southlanarkshire.gov.uk/info/200186/primary_school_information/392/enrolling_your_child_for_school

If you have any difficulty in identifying your catchment school, please email

Edsuppserv.help@southlanarkshire.gov.uk

The online registration form will ask you to provide each child's full birth certificate and two pieces of recent official documentation both containing your permanent home address for example a utility bill, council tax statement, housing rent card, child benefit documentation. Proof of where the child lives may also be needed.

If your child is due to start school in August 2026, you can enrol online from Monday 5 January 2026. Your catchment school will contact you between Monday 12 and Friday 16 January 2026 to confirm your enrolment.

If your child attends the nursery of your catchment school, please do not assume that they will automatically be transferred. **You must register them as normal** at the school that is in the catchment area for your home address

If parents want their child to go to another school, they must enrol in the first instance with their catchment school and intimate that they wish to make a placing request. An online placing request form should then be completed. This is available from the SLC website – www.southlanarkshire.gov.uk or by [contacting edsuppserv.help@southlanarkshire.gov.uk](mailto:edsuppserv.help@southlanarkshire.gov.uk) or phone **0303 123 1023**.

Change of School/Placing Request - Normally children attend the school in their catchment area. However, there are times when parents may wish their children to go to other schools. If you wish your child to go to another school, then you may make what is known as a 'placing request'. If you live in South Lanarkshire and decide to submit a 'placing request', we are unable to reserve a place in your catchment school until the Council have made a decision on the 'placing request'. Please note if your 'placing request' application is unsuccessful and all places at your catchment school are filled you will be offered a place at the next nearest appropriate South Lanarkshire School. Please note that if an application for a 'placing request' is successful then school transport is not provided.

If you move outwith your catchment primary school a 'request to remain form' must be completed. If you move outwith your catchment primary, this may affect your right to transfer to the associated Secondary School. Please note the secondary school is determined by the pupil's permanent home address and chosen denomination. If you require further information, please contact Education Support Services on edsuppserv.help@southlanarkshire.gov.uk or **0303 123 1023**.

Transition from Primary to Secondary School - Pupils normally transfer from primary to secondary school between the ages of 11½ and 12½, so that they will have the opportunity to complete at least 4 years of secondary education. Arrangements are made by the school to transfer children to the associated secondary school as determined by their home address. Parents of P7 children will be informed of the transfer arrangements made for their child to attend secondary school. We will also provide you with information at this time on events designed to support P7 children before they move on to secondary school.

11. Support for Pupils

Getting It Right For Every Child (GIRFEC) supports families by making sure children and young people can receive the right help, at the right time, from the right people. The aim is to help them to grow up feeling loved, safe, and respected so that they can realise their full potential. Most children

and young people get all the help and support they need from their parent(s), wider family, and community but sometimes, perhaps unexpectedly, they may need a bit of extra help. GIRFEC is a way for families to work in partnership with people who can support them, such as teachers.

If you have any concerns about your child's wellbeing, you can speak to the named person who will work with you to provide support and decide how to move forward. Your school will let you know who this is. It is likely to be the Head Teacher in a primary school and a principal teacher (pupil support) in Secondary. More information can be found on: www.scotland.gov.uk/gettingitright

Support for All (Additional Support Needs) – St. Vincent's Primary School utilises and promotes GIRFEC, and we strive to support and challenge all learners appropriately. We utilise the Staged Intervention Process effectively to ensure support is provided if required, whether that is in class from their teacher, access to small additional groups or advice sought from other professionals and/or agencies. For a few learners, this may be recorded in the forms of Additional or Coordinated Support Plans or involve input from our Specialist Support Teacher (SST) or Educational Psychologist (EP). On other occasions, we may seek support or advice from external agencies, such as Occupational Therapy, Speech & Language, Child and Family Clinic, NHS and/or Social Work. Parents/Carers will always be involved in discussions related to the staged intervention process or application to the aforementioned agencies.

South Lanarkshire Education Resources have published a series of leaflets available which cover information for parents and carers about the Additional Support for Learning Acts.

Enquire (Scottish Advice Service for ASN) - Enquire is funded by the Scottish Government to provide information on the framework for supporting children who require additional support for learning and to encourage positive partnerships between families, schools, and local authorities to ensure children get the right support. Enquire offers independent, confidential advice and information on additional support for learning through:

Enquire,
Children in Scotland,
Rosebery House,
9 Haymarket Terrace,
Edinburgh,
EH12 5EZ.

Email: info@enquire.org.uk

Phone: 0345 123 2303

Website: www.enquire.org.uk

Enquire provides a range of clear and easy-to-read guides and fact sheets including the parents' guide to additional support for learning. If you would like to order our leaflets, postcards or guides to share with parents and carers of pupils in your school, please contact us on info@enquire.org.uk

Attachment Strategy for Education Resources

What we do to support children and young people? South Lanarkshire Council Education Resources is committed to improving outcomes for children and young people by creating

emotionally supportive learning experiences in our nurseries and schools. The Education Resources Attachment Strategy supports the action in the 'Getting it Right for Every Child in South Lanarkshire's Children Services Plan 2021-23', following the launch of the Attachment Strategy in 2020, to provide staff training in Attachment and Trauma based practice.

What does it set out to do? The aim of the strategy is to promote better experiences of attachment for South Lanarkshire's children and young people and to ensure that all education practitioners understand the importance of attachment theory and its application and how positive relationships can make a difference to outcomes.

How can I find out more? South Lanarkshire Council Education Resources have published a series of leaflets and posters for establishments and for parents/carers which aim to share information on attachment theory and on how this informs the ways in which we support children and young people. These are available in schools and on the SLC Staff Learning Centre for teachers and staff.

Promoting Positive Relationships and Understanding Distressed Behaviour (PPRUDB)

PPRUDB is South Lanarkshire's framework for understanding and managing behaviour in schools. It emphasises that all behaviour is a form of communication, often indicating unmet needs, and stresses the importance of building positive relationships as a fundamental skill for teachers and a preventive approach to distressed behaviour. The guidance aligns with key Scottish Government policies and legislation and supports the development of safe, inclusive, and nurturing school environments.

Children and young people who feel safe, healthy, respected, and included are more likely to develop self-confidence and resilience. South Lanarkshire Council's attachment-informed, trauma-sensitive approach, aims to create a secure base and safe haven to reduce the impact of adverse childhood experiences. School staff recognise that distressed behaviour can stem from disrupted attachment, anxiety, and other complex needs, including neurodevelopmental conditions and limited communication skills.

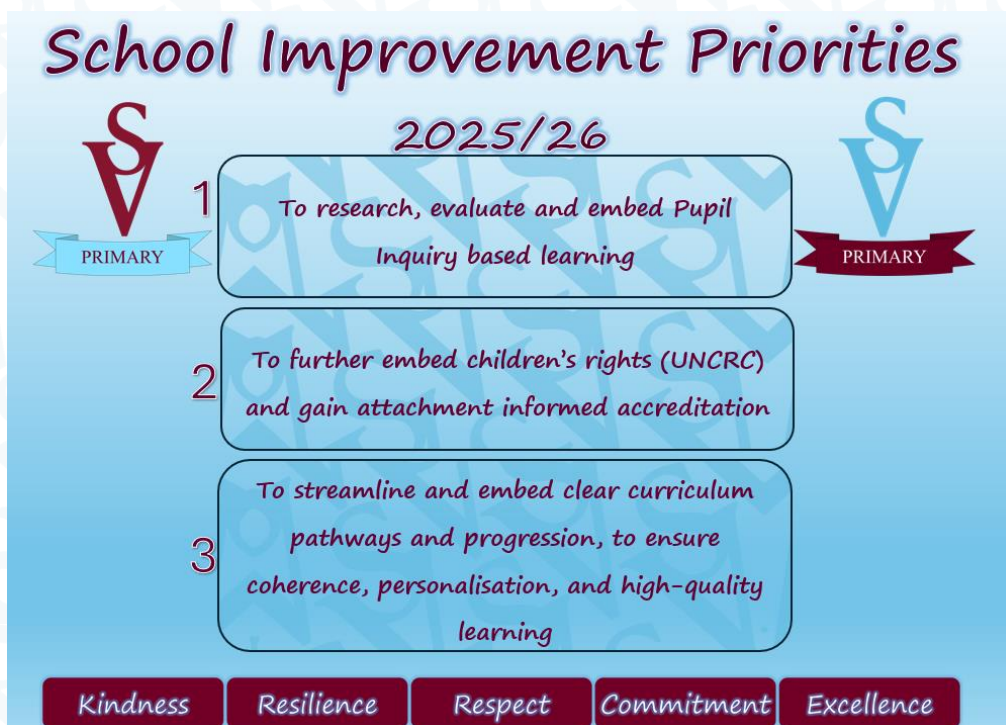
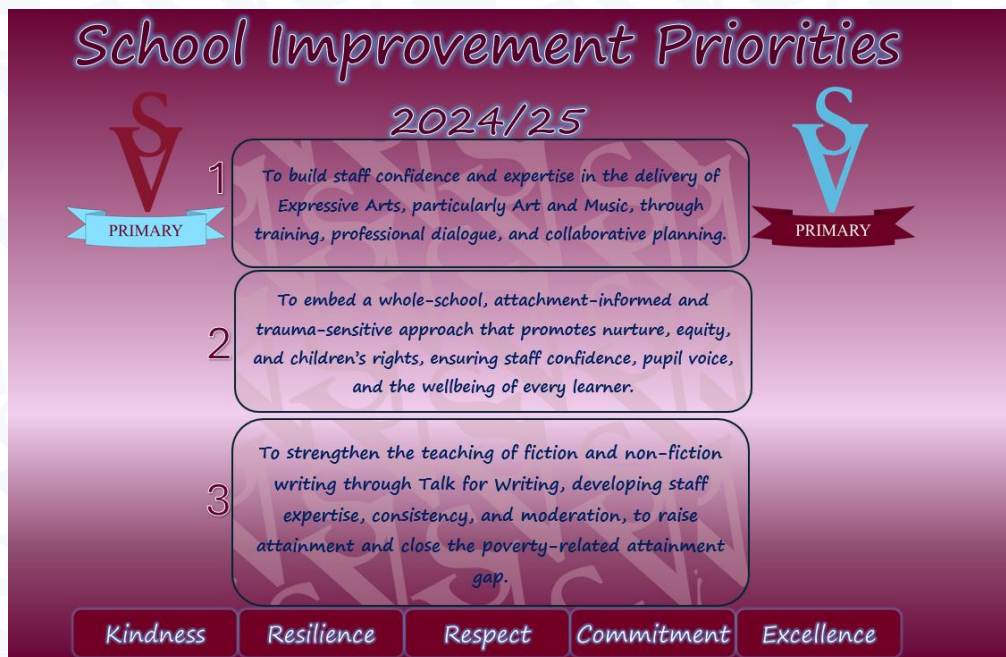
When incidents of distressed behaviour arise in schools, staff will use a range of strategies to de-escalate situations and prevent re-occurrence. Strategies include structuring the environment with consistent routines and quiet areas, adapting communication to accommodate speech and sensory needs, and building positive relationships based on shared values. Setting clear limits with dignity, active listening, and inclusive teaching practices support behaviour management. Planning for transitions and using support plans like Additional Support Plans (ASPs) and Behaviour Assessment and Support Plans (BASPs) assist in addressing individual needs.

Each educational establishment should use the PPRUDB framework to develop and implement a relationships and behaviour policy through consultation with staff, pupils, and parents, reviewing it every three years. Further information is available – contact via email.

12. School Improvement

As a school community, we consider views from all stakeholders, as well as school, local and national priorities. We then work in partnership to review, consult and agree our school improvement priorities for the coming session. Below you can see our priorities for last session and this session. [Follow this link for a detailed evaluation of 24/25 and rationale for 25/26.](#)

Together, we aim for every learner to achieve their full potential by providing rich, relevant, and engaging learning experiences that prepare them with skills for life, learning, and work. At St Vincent's, we promote the four capacities of Curriculum for Excellence and provide every opportunity for our pupils to be Successful Learners, Confident Individuals, Effective Contributors, and Responsible Citizens. Through collaboration and faith, we encourage everyone in our community to be inspired, ambitious, and resilient in striving for excellence and positive outcomes.



How Can You Shape Our Priorities - Participatory Budget (PB)

St. Vincent's Primary School
Participatory Budget (PB) - 2025/26

What is PB?

- PB is a way for families to have a direct say in how money is spent and gives people a voice.
- Participatory budgeting is about exploring coming up with suggestions.

At St. Vincent's Primary School, we have committed 5% of our Pupil Equity Fund to Participatory Budgeting for Session 2025/26, this equates to around £4000!

5%

We believe all stakeholders should be included in this decision-making process and recognise how the UNCRC encourages this too!

UNCRC Article 12

We need parents, carers to contribute to our PB Group to ensure our budget is spent on what really matters to you!

Please follow this link to suggest some ideas for spending our PB Fund:

Kindness Resilience Respect Commitment Excellence

13. School Policies & Practical Information

Healthy eating is something that the school supports, and a range of meals are available at lunchtime that meet the Nutritional Requirements for Food and Drink in Schools (Scotland) Regulations 2020

All primary schools run a Breakfast service from 8.15am to 8.45am with pupils being offered a selection of toast, cereal or fruit along with a cup of milk.

For their lunch each day pupils have the option to choose from two hot meal options (one being vegetarian option) plus a sandwich selection everyday. All meals also come with fresh chilled drinking water, vegetable choice, salad selection, seasonal fruit and depending on the day - soup or a dessert. Milk will be available for those pupils entitled to free school meals through the free school meal eligibility scheme at morning break or lunchtime.

Primary 1 to 5	Primary 6 & 7
Free School Lunch	£2.62

School lunches and milk can be paid for through your Parent Pay account. Please note: School Meal prices are reviewed annually and may be subject to change

Adapted Diets - If your child within Nursery, Primary or Secondary requires an adapted diet for medical reasons please speak to the school/nursery office who will provide the request form for you

to complete. In addition, if you have a halal or vegan diet request for your child, please speak to the school office who will provide you with a request form.

Free School Meals - Children of parents who receive the following benefits are entitled to a free lunchtime meal for their child:

- Income Support
- Income-based Job Seeker's Allowance
- Income-based Employment and Support Allowance
- Scottish Child Payment (P6 and P7 pupils)
- Support under Part VI of the Immigration and Asylum Act 1999
- Universal Credit (and your earned income is less than £850 as assessed by the Department for Work and Pensions in the assessment period immediately preceding the application for free school meals)

If you are in receipt of Housing Benefit and/or Council Tax Reduction from us there is no need for you to apply online, we will use the information we hold to automatically award free school meals (P6 to S6) and/or school clothing grants (P1 to S6) to eligible families.

We would encourage parents of children who are in receipt of any of the above benefits to take up this opportunity of having a meal provided for their child when they are at school. Arrangements are in place to ensure anonymity is protected of children who receive free meals, and we encourage all children to remain in school at lunch time.

Further information can be found at
[Free school meals - South Lanarkshire Council](#) or by
accessing the QR below



School Uniform - We ask all parents/carers to support the school by encouraging your child(ren) to adhere to the agreed dress code and the wearing of our school uniform. The wearing of a school uniform helps promote the identity of the school in the local community and helps create an ethos of sharing and pride in the school. In addition, the wearing of a uniform helps towards increasing the protection of all pupils. The wearing of a uniform helps staff and the pupils to distinguish between who belongs to the school and those who may be visitors. This enables staff to approach and identify visitors more readily and helps in trying to offer a safer environment for pupils and teachers alike.

Equality of opportunity is an important aspect of the life of the school. Any proposals on the dress code and on what constitutes the school uniform will be the subject of discussion with the Parent Council and where appropriate consultation with parents, pupils and staff.

There are forms of dress which are unacceptable in all schools such as: the wearing of football colours; clothing with slogans that may cause offence (anti-religious, symbolism or political slogans); clothing which advertises alcohol, tobacco, or drugs; clothing which can be deemed unsuitable in terms of health and safety grounds such as shell suits, combat style clothing, dangling earrings, loose fitting clothes particularly in practical classes; articles of clothing that could be deemed to inflict damage on other pupils or be used by others to do so; footwear that may damage flooring.

Allergies - Many children in our schools have allergies, and it is crucial for parents to keep the school informed about these conditions.

Health Care Plans - Allergies can manifest at any time with symptoms ranging from mild to severe. Children with moderate to severe allergies often have a Health Care Plan from the NHS, detailing symptoms and interventions. Parents **must share this plan with the school** and provide updates as necessary.

Mild Symptoms - Even without a Health Care Plan, parents should regularly update the school on any new triggers, medications, or actions required.

Employee Training - School staff need to know your child's symptoms, treatments, and actions required to prevent exposure and minimise the risk of reactions. Employees receive training on allergies and will consult with parents and the NHS for any additional specialist training needed.

Policy Adherence - In supporting children and young people with allergies, school staff will follow South Lanarkshire Council's Safe Systems of Work, risk assessment process, and national guidance on the administration of medicines.

Mobile Device Policy - Our school follows South Lanarkshire Council guidance on mobile device use, which is rooted in Scottish Government policy. Mobile technology can support learning and communication, but it can also disrupt lessons and affect wellbeing if misused. To maintain a safe, respectful, and inclusive learning environment, pupils are expected to use mobile devices responsibly and in line with school rules. Devices should not be used during class unless specifically permitted for learning purposes.

[More Information on Our School Policy can be found in this link](#)

The policy has been developed in consultation with pupils, parents, and staff to balance the benefits of technology with the need to minimise distractions and protect privacy. We ask parents to support this approach by reinforcing responsible use at home and ensuring that devices are used appropriately.

Support for Parent/Carers

Clothing Grant - In certain circumstances the Council provides support to parents/carers for the purchase of school wear. This also now includes nursery children aged 3 and 4 years old. Eligibility criteria and online applications can be found at www.southlanarkshire.gov.uk. Or via this link [Clothing grants - South Lanarkshire Council](#) Should you require further information, or you are unable to submit an application online then please contact the helpline number **0303 123 1011** (option 5).

School hours/holiday dates – School starts at 9am and concludes at 3pm every day. Please note children can be dropped off from 8.45am when supervision begins. Children should not be dropped before this time unless attending breakfast club. Interval is at 10.30am (15 mins) and lunch is at 12.15pm (45 mins). School holidays and in-service day dates can be found at:

[School holidays 2025/26 \(approved\) - South Lanarkshire Council](#)

School Transport - South Lanarkshire Council's mainstream school transport policy provides transport for primary school pupils who live one mile or more from their catchment primary school by the shortest safe walking route.

More details on school transport can be found at the following link including the online application form: https://www.southlanarkshire.gov.uk/info/200186/primary_school_information/545/school_transport

If you consider your child to be eligible you should complete the online application form. Forms should be submitted before the end of March for those pupils starting school in August to enable the appropriate arrangements to be made.

A privilege transport scheme is operated on mainstream school contracts where a pupil is not entitled to school transport. Privilege Transport will only be provided where there is a space on an existing school contract and will be from and to designated pick-up and drop-off points. It will not be provided where a service bus is used on the school run. Any spare capacity will be allocated using agreed priorities. A new application must be made each year. More details on Privilege School Transport may be found here:

https://www.southlanarkshire.gov.uk/info/200186/primary_school_information/784/privilege_transport_to_school

Pick Up Points - Where school transport is provided it may be necessary for pupils to walk a certain distance to the vehicle pick-up point. Walking distance in total, including the distance from home to the pick-up point and from the drop-off point to the school in any one direction, will not exceed the authority's distance limit for school transport. It should be noted that it is the parent's responsibility to ensure their child behaves in a safe and acceptable manner while travelling in, and alighting from, the vehicle. Misbehaviour can result in your child losing the right to school transport. **Parents are asked to note that South Lanarkshire Council does not provide transport for those pupils who attend school via a placing request.**

Mainstream School Transport Contact Details:

Email: school_transport@southlanarkshire.gov.uk

Phone: 0303 123 1023

Insurance for Pupils' Personal Belongings

Personal Items

- The Council cannot accept responsibility for the loss or theft of personal belongings, including mobile phones, tablets, or other valuables. These are brought to school at the pupil's and parents' own risk.
- To reduce the chance of loss, please avoid sending expensive or unnecessary items to school.
- School staff are not permitted to look after pupils' personal belongings.
- This policy also applies to musical instruments and equipment used for school activities. If these items are left at school, it is at the pupil's and parents' own risk.
- For valuable items such as musical instruments, parents should make sure they are covered by their own household insurance.

Clothing

- The Council will only consider claims for damage to pupils' clothing if the damage was caused by negligence on the part of the Council or its employees.
- Claims for any other reason cannot be accepted by the Council's insurers.

Promoting Positive Behaviour - It is the responsibility of staff within the school to ensure that parent council members, parents and pupils are involved in the creation of a positive school ethos that encourages good behaviour. Equally, the school whilst trying to promote positive behaviour must support young people should incidents or bullying occur. Parents have a significant role to play in working with the school so that teachers, parents, and pupils know what is expected of them in trying to change the behaviour and attitudes that contribute to bullying behaviour.

Our approach is to create an environment where better behaviour will encourage better learning. The school, along with the support of parents, can work together to create a learning environment which young people can enjoy and feel safe. Incidents of bullying should be reported to the school immediately so that each alleged incident can be looked at. Together we can work towards creating a safer school for children and staff.

In addition, a guideline (Promoting Positive Relationships and Behaviour) has been produced to support all teaching and support staff and inform them of their roles and responsibilities in respect of dealing with the small number of children and young people who display challenging behaviour. Early identification is crucial so that intervention can be provided to support children and young people to help them address their issues and concerns. Staff training is provided to help develop the skills needed to respond to and manage challenging behaviour. A wide range of appropriate staff development opportunities has been developed for this purpose.

Child Protection - All staff in educational establishments in South Lanarkshire Council receive an annual Child Protection update and are required to follow the advice and guidance contained within relevant Education Operating Procedures. They must also complete a mandatory Learn on Line Course "Child Protection in Education".

South Lanarkshire's children's services partnership works together to support children, young people, and their families so that children grow up in communities where they are safe, healthy, active, achieving, respected, responsible and included, and have the opportunity to achieve their full potential. They are committed to continuously improve our services to ensure children, young people and their families get the right support at the right time.

Sometimes children and young people need additional help to make sure that they are *"cared for and protected from abuse and harm in a safe environment in which their rights are respected"* (CPC South Lanarkshire Child Protection shared vision). The Child Protection Committee has the overarching responsibility to ensure that agencies individually and collectively work to protect children and young people as effectively as possible.

All staff have a responsibility to report any suspicions that a child has been abused or is at risk of harm, abuse, or neglect. Robust procedures and guidance are in place to support education staff to

- **be alert to signs that a child may be experiencing risks to their wellbeing,**
- **report concerns to the head of establishment or the child protection coordinator without delay.**
- **be actively engaged in support and protection and development of wellbeing.**

If you would like more information, or have a concern of a child protection nature, please contact the head of the educational establishment which your child attends. The Child Protection Committee's website has a range of useful information for parents/carers to help them keep their children safe. www.childprotectionsouthlanarkshire.org.uk

Our Commitment to Children's Rights

In line with the United Nations Convention on the Rights of the Child (UNCRC), our school is committed to respecting and promoting every child's rights. We believe that children have the right to express their views on matters that affect them, and we will actively listen and take these views into account when making decisions.

To achieve this, we will:

- Create opportunities for pupils to share their opinions through class discussions, pupil councils, and consultation activities.
- Ensure that decisions about school policies and practices consider the voice of the child.
- Promote an inclusive, rights-respecting environment where every child feels valued and heard.

This approach supports our aim to empower learners, strengthen partnerships with families, and uphold equality and participation for all.

14. General Data Protection Regulation as supplemented by the Data Protection Act 2018 (GDPR)

Information on pupils, parents and guardians is held by the school to enable the teaching, registration, and assessment of pupils as well as associated administrative duties. The information is stored and used as per the requirements of the GDPR, with South Lanarkshire Council defined as the data controller. The Council have established a data protection policy that applies to all of its school.

Education Resources has also prepared a privacy notice (below) which sets out how we will deal with personal information as part of our statutory function as an education authority. For more information, please contact the school.

Privacy Notice Introduction - In line with the General Data Protection Regulation (GDPR) we have produced this privacy notice to inform you how we deal with personal information as part of our statutory function as an education authority.

The Council has a legal obligation to deliver effective education services to children, young people, and adult learners in South Lanarkshire. In order to do this, we need to collect personal information about children, young people, and their families so that we can help them to learn and keep them safe.

Using your personal information - The Council is a "controller" of the personal information you provide when enrolling for a nursery or school, applying for an education service, or participating in groups or activities provided by Education Resources.

Information we collect from you about you and your child at enrolment - When you enrol for a nursery or school, we ask for the following information: parent/carer contact details (name, address, phone, email), the child's name, date of birth, gender, and address, information about medical conditions, additional support needs, religion, and ethnicity, any information you may wish to provide about family circumstances.

Information we collect at other times - We will also collect information at other times such as when you apply for a benefit, request a services or other support. We will provide an additional privacy notice at these times.

If you apply for an education service or benefit, such as school transport, free school meals, clothing grant, placing request or EMA, we will also ask for personal information as set out above. We will also ask for information about your income for education benefits applications.

If you make a request for additional support such as an Educational Psychologist or other support for learning, we will ask for more detailed information to allow us to provide the most appropriate support for your family. This may include information about family circumstances or medical conditions.

If there are concerns about your child's wellbeing and/or your child has needs that may require additional support, we will wish to work with you to collect and consider information to enable us to help you get the right support at the right time in line with the Getting It Right For Every Child (GIRFEC) approach.

We require this information to ensure that children and young people are educated appropriately, supported, and that we take account of their health and wellbeing. We will also ask you to update this information annually and to tell us when there are changes to your details.

Information that we collect from other sources - As an education authority and as part of our statutory function in accordance with our legal obligations, we receive information from other sources such as the SQA, the NHS or Social Work about you or your child, this includes: exam results and assessment information; information about health, wellbeing, or child protection.

Why do we need this information? We need this information so the Council can ensure it is delivering education services appropriately to all learners:

- for the education of children, young people and adult learners.
- for teaching, enrolment, and assessment purposes and to monitor the educational progress of children, young people and adult learners;
- to keep children and young people safe and provide guidance services in school;
- to identify where additional support is needed to help children, young people and adult learners with their learning;
- to maintain records of attendance, absence and behaviour of children and young people (including exclusions);
- to support children and young people moving on each year from nursery to primary, primary to secondary and when they move or leave school;
- to help us develop and improve education services provided for young people, adult learners, or families

In accordance with our legitimate interests as an education authority we will also use your information to create statistical reports.

We will share your information with: As an education authority and as part of our statutory function in accordance with our legal obligations we will share information with other bodies or parts of the Council, including:

- The Scottish Government and bodies such as Education Scotland, Scottish Qualifications Authority, Skills Development Scotland, and other organisations that support children and young people's learning.
- Other parts of the Council when required for services such as school meals, school transport, education benefits and with Social Work in connection with any child protection concerns we become aware of.
- The NHS, to support health initiatives in accordance with the legal obligation on the Council in terms of section 39(3) of the National Health Service (Scotland) Act 1978.
- South Lanarkshire Leisure and Culture Limited, where children and young people are participating in sports and leisure activities.
- Other schools/local authorities – if a child moves or transfers to another school the Council has an obligation to pass on information with regards to pupil records to the new school/local authority.

You have the right to access your personal information as well as the rights of rectification, erasure, restriction, and the right to object. For information on these rights and how to exercise them or for information about how we manage your personal information, you can get a copy of our full privacy notice from our website:

https://www.southlanarkshire.gov.uk/info/200235/meta/1730/general_privacy

Our full privacy notice will also provide information on how to make a complaint or to request a paper copy of the privacy notice from the Data Protection Officer.

The Freedom of Information (Scotland) Act 2002 - The Freedom of Information (Scotland) Act 2002 came into force on 1 January 2005 and gives a person the right to request information held by Scottish public authorities. The act refers to information held in a 'recordable' format and relates to information held within documents, not the documents themselves. Parents wishing to make a request for information under the terms of the Freedom of Information (Scotland) Act 2002 should submit their request in writing to:

Freedom of Information Officer
Education Resources
South Lanarkshire Council
Council Offices, Almada Street,
Hamilton, ML3 0AA
Email: foi.request@southlanarkshire.gov.uk

Requests for information can also be submitted using the online form available from the South Lanarkshire Council website (Request It section) (www.southlanarkshire.gov.uk).

Appendix A

For a comprehensive list of useful information, please visit the Council's website:

http://www.southlanarkshire.gov.uk/info/200186/primary_school_information/1264/curriculum_for_excellence/3

Additional Information

- Education Scotland's Communication Toolkit: A resource for engaging with parents.
- The Scottish Government Guide Principles of Inclusive Communications: Offers information on communications and a self-assessment tool for public authorities.
- Choosing a School: A Guide for Parents: Provides information on choosing a school and the placing request system.
- A Guide for Parents About School Attendance: Explains parental responsibilities regarding children's attendance at school.
- Parental Involvement - Guidance on the Scottish Schools (Parental Involvement) Act 2006 provides guidance on the act for education authorities, Parent Councils, and others.

- Parentzone provide information and resource for parents and Parent Councils
- National Parent Forum for Scotland; www.npfs.org.uk

School Ethos

- Supporting Learners - guidance on the identification, planning and provision of support.
- Journey to Excellence - provides guidance and advice about culture and ethos.
- Health and wellbeing guidance on healthy living for local authorities and schools.
- Building Curriculum for Excellence Through Positive Behaviour and Relationships outlines the Scottish Government's priority actions around positive behaviour in schools and is also a source of support.
- Scottish Catholic Education Service's resource 'This is Our Faith' which supports the teaching and learning of Catholic religious education.

Curriculum

- Information about how the curriculum is structured and curriculum planning.
- Information about the outcomes a learner can expect to experience and achieve across literacy, numeracy and health and wellbeing, as well as the 8 curricular areas.
- Advice, practice, and resources to support the experiences and outcomes on literacy, numeracy and health and wellbeing.
- Broad General Education in the Secondary School – A Guide for Parents and Carers
- Information on the Senior Phase
- Information on Skills for learning, life, and work
- Information around the Scottish Government's 'Opportunities for All' programme
- Information for organisations responsible for the planning, management and delivery of career information, advice, and guidance services
- The Skills Development Scotland website 'My World of Work' offers a number of tools to support career planning.

Assessment and Reporting

- Building the Curriculum 5: a framework for assessment provides guidance around the assessment framework.
- Information about Curriculum for Excellence levels and how progress is assessed.
- Curriculum for Excellence factfile - Assessment and qualifications.
- Information on recognising achievement, reporting, and profiling.
- The Scottish National Standardised Assessment- in Scotland, pupils in P1, P4, P7 and S3 complete online standardised assessments in literacy and numeracy as part of their everyday learning and teaching.

Transitions

- Curriculum for Excellence factfile - 3-18 Transitions - provides information on the transitions children and young people will face throughout their education and beyond.
- Career Information, Advice and Guidance in Scotland - A Framework for Service Redesign and Improvement provides guidance on career information, advice, and guidance strategy.
- Choices and changes provides information about choices made at various stages of learning.
- The Additional support for learning page provides links to relevant legislation and guidance, including the arrangements that should be in place to support pupils with additional support needs.
- Supporting Children's Learning Code of Practice includes specific requirements on education authorities and others under the new legislation in relation to transition.
- Enquire is the Scottish advice service for additional support for learning.
- Parenting Across Scotland offers support to children and families in Scotland.

Support for Pupils

- The Additional support for learning page provides links to relevant legislation and guidance, including the arrangements that should be in place to support pupils with additional support needs.
- Information about the universal entitlement to support that underpins Curriculum for Excellence.
- Supporting Children's Learning Code of Practice (Revised edition) - provides Statutory guidance relating to the Education (Additional Support for Learning) (Scotland) Act 2004 as amended.
- Getting It Right for Every Child and Young Person, is essential reading for anyone involved or working with children and young people, including practitioners working in adult services with parents and carers.

School Improvement

- Scottish Schools Online - provides a range of school information, including contact details, school roll, facilities, website, inspection reports.
- Education Scotland's Inspection and review page provides information on the inspection process.
- Scottish Credit and Qualifications Framework (SCQF).
- Scottish Qualifications Authority provides information for teachers, parents, employers, and young people on qualifications.
- Amazing Things - information about youth awards in Scotland.
- Information on how to access statistics relating to School Education.

School Policies and Practical Information

- Schools and local authorities should consider the most relevant school, local and national policies and include details or links for parents to sources of further information.
- National policies, information and guidance can be accessed from the Scottish Government website on www.gov.scot with an update on school inspection outcomes being available via the Education Scotland website.



School Values



Kindness

Resilience

Respect

Commitment

Excellence



Gospel Values



Faith

Love

Forgiveness

Compassion

Service

